

BACKGROUND

- To meet the BC Healthy Families - Healthy Start agenda, Interior Health is developing innovative ways to connect with and support all pregnant women
- This service will shift the emphasis and initiation of services from postnatal to early prenatal in partnership with prenatal women, physicians, midwives, public health nurses and other community partners
- This is a universal service to engage all pregnant women in Interior Health
- This provides consistent service, practice standards and identifies vulnerable families that would benefit from additional resources such as the BC Healthy Connections Project
- The purpose is to develop a centralized universal prenatal and weekend postnatal call centre to strengthen the continuum of care to prenatal and postnatal families. This poster focuses on the first of three phases (phase 1)

OBJECTIVES

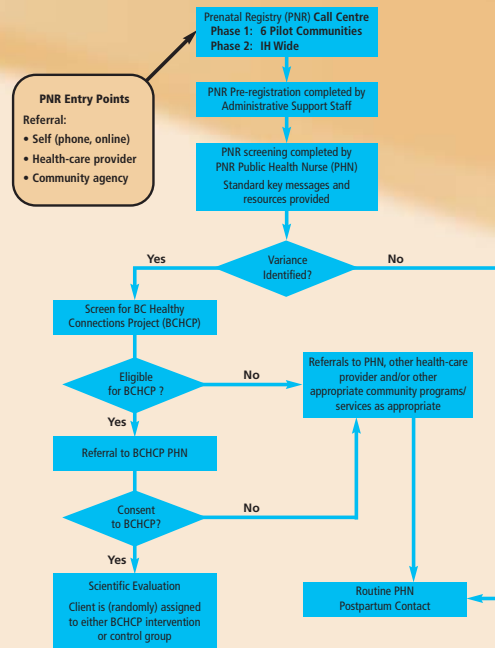
- To make early contact with prenatal women in IH
- To provide integrated, equitable, accessible and standardized health promotion, prevention and intervention with prenatal women
- To determine appropriate referral and program eligibility by using a standardized prenatal tool
- To provide standardized prenatal educational material for all prenatal families
- To provide screening, triage and referral to appropriate programs, services and providers to optimize perinatal care
- To develop a standard screening tool and guidelines, data collection forms, and processes including data entry

METHODS

— refer to Interior Health Prenatal Care Pathway

- Phase 1 of the Prenatal Registry (Figure 1) began on August 14, 2012 in the six BC Healthy Connections Project sites
- All prenatal woman regardless of gestational age are eligible
- Clients can self-refer through a toll-free phone line or by registering online
- Primary care providers and community agencies are encouraged to refer prenatal women
- Prenatal women can talk directly with a Public Health Nurse (PHN) who will use a strength-based, client/family centered approach to provide screening, prenatal education and referrals as required

Interior Health Prenatal Care Pathway



RESULTS

- 68 prenatal women registered between August 14 – October 31
- 8 referrals received from service providers (physician, midwife and nurse)
- 13 prenatal women referred for further PHN services (9 eligible for BC Healthy Connections Project)
- Prenatal service resource directory created for all Phase 1 sites
- Early identification of women's needs in areas such as mental health and substance use
- Gaps in services identified
- Learning needs for staff identified. This includes guidelines and training for PHNs related to the prenatal period
- Positive comments from nursing staff:
 - “We have had such a positive response from our doctors and the Perinatal Working Group. They are really impressed with the resource directory. We have had many requests to share.” — PHN, Vernon
 - “This service is hugely beneficial. It gives us such an opportunity to connect early with moms... (who) wouldn't otherwise have the opportunity to talk to a nurse and get connected with services...” — PHN, Kelowna

CHALLENGES

- Human resources: staffing the Prenatal Registry (PHNs)
- Evaluation: securing evaluation resources
- Technology: delay in encryption of online registration form for online self referrals

CONCLUSIONS

- Prenatal Registry is helping strengthen relationships across and outside IH and aligns with Accreditation Canada Standards
- Prenatal Registry is a vehicle to promote a healthy start through integration across the service spectrum, i.e. Primary Care, Divisions of Family Practice, Acute Care, Tobacco Reduction, Mental Health and Substance Use, Promotion and Prevention, Aboriginal Health, Chronic Disease Management (Diabetes) and IMIT
- Vulnerable women who are eligible for services such as BC Healthy Connections Project are calling in and connecting with a PHN
- Referrals are being made to the BC Healthy Connections Project

NEXT STEPS

Interior Health

- Phase 2: expand the Prenatal Registry to all Interior Health communities
- Phase 3: expand to deliver postnatal weekend call service in areas without maternity care discharge programs

Provincial

Align with provincial work on a prenatal care pathway

