



OVERCOMING CHALLENGES - TAKING VISION TO ACTION

PHABC CONFERENCE – MINISTRY OF HEALTH ½ DAY SESSION
NOVEMBER 6, 2013

ARLENE PATON, ADM, POPULATION & PUBLIC HEALTH, MINISTRY OF HEALTH
JEFFREY SIMPSON, GLOBE AND MAIL NATIONAL AFFAIRS COLUMNIST

AGENDA

8:30 Aboriginal Welcome – Elder Margaret

Ministry Welcome

BC's Guiding Framework for Public Health – Arlene Paton

Networking Break

Keynote Presentation – Jeffrey Simpson

Questions & Answers

11:30 Wrap Up – Arlene Paton

MINISTRY OF HEALTH WELCOME

BC'S GUIDING FRAMEWORK FOR PUBLIC HEALTH



PROMOTE, PROTECT, PREVENT:
Our Health Begins Here

- ❖ 10 Year guiding document for public health service delivery in BC
 - ❖ Leverages current public health efforts and builds a road map for future action
 - ❖ Relies on successful partnerships with other sectors
 - ❖ Supports a solid foundation for public health action and infrastructure

THE INSPIRATION FOR THE GUIDING FRAMEWORK

- ❖ Obesity epidemic & chronic disease trends
- ❖ Need to address the drivers of health and health care costs
 - ❖ Risk factors for chronic disease
 - ❖ Communicable disease outbreaks
 - ❖ Mental health
 - ❖ Changing environmental conditions that affect health
 - ❖ Public health capacity



WHERE WE'VE BEEN

Several key achievements & developments for public health in BC

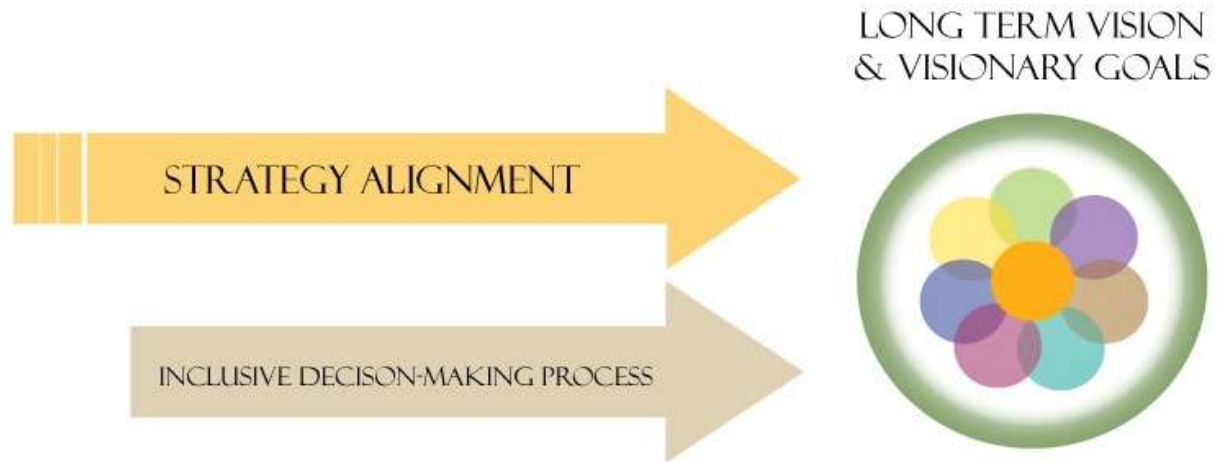
- ❖ Core Public Health Functions
- ❖ New Public Health Act & other key legislation
- ❖ Investing in Prevention (PHO Report)
- ❖ ActNow BC → Healthy Families BC
- ❖ Healthy Minds, Healthy People; Seniors Action Plan; and other key strategies
- ❖ Declaration on Prevention and Promotion

CALL FOR A VISION

- ❖ Consensus from health authorities and decision-makers that a road map was needed to support and coordinate public health activities
 - ❖ Help prioritize action
 - ❖ Develop a process to inform priority-setting
 - ❖ Reduce demand for health care services



PURPOSE & PRIMARY FOCUS



PH ROLE IN AFFECTING THE SOCIAL DETERMINANTS & EQUITY

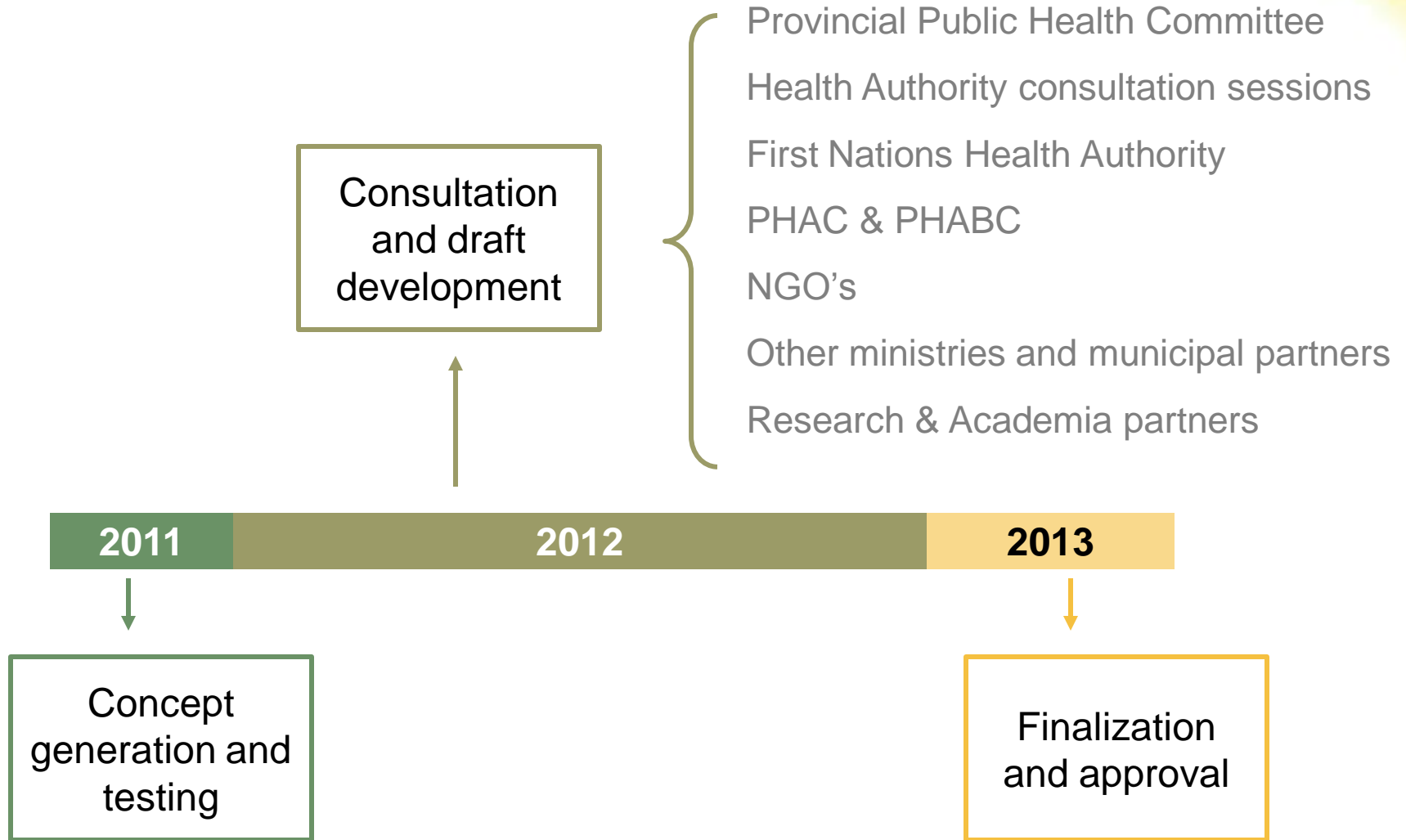
ALIGNMENT WITH PRIMARY CARE & PUBLIC HEALTH TRIPARTITE STRATEGY COUNCIL
& FIRST NATIONS WELLNESS PLAN

SELF CARE, PRIMARY CARE & CLINICAL PREVENTION

CORE PUBLIC HEALTH FUNCTIONS

MODERNIZED LEGISLATION

DEVELOPMENT PROCESS



STRATEGIC ELEMENTS

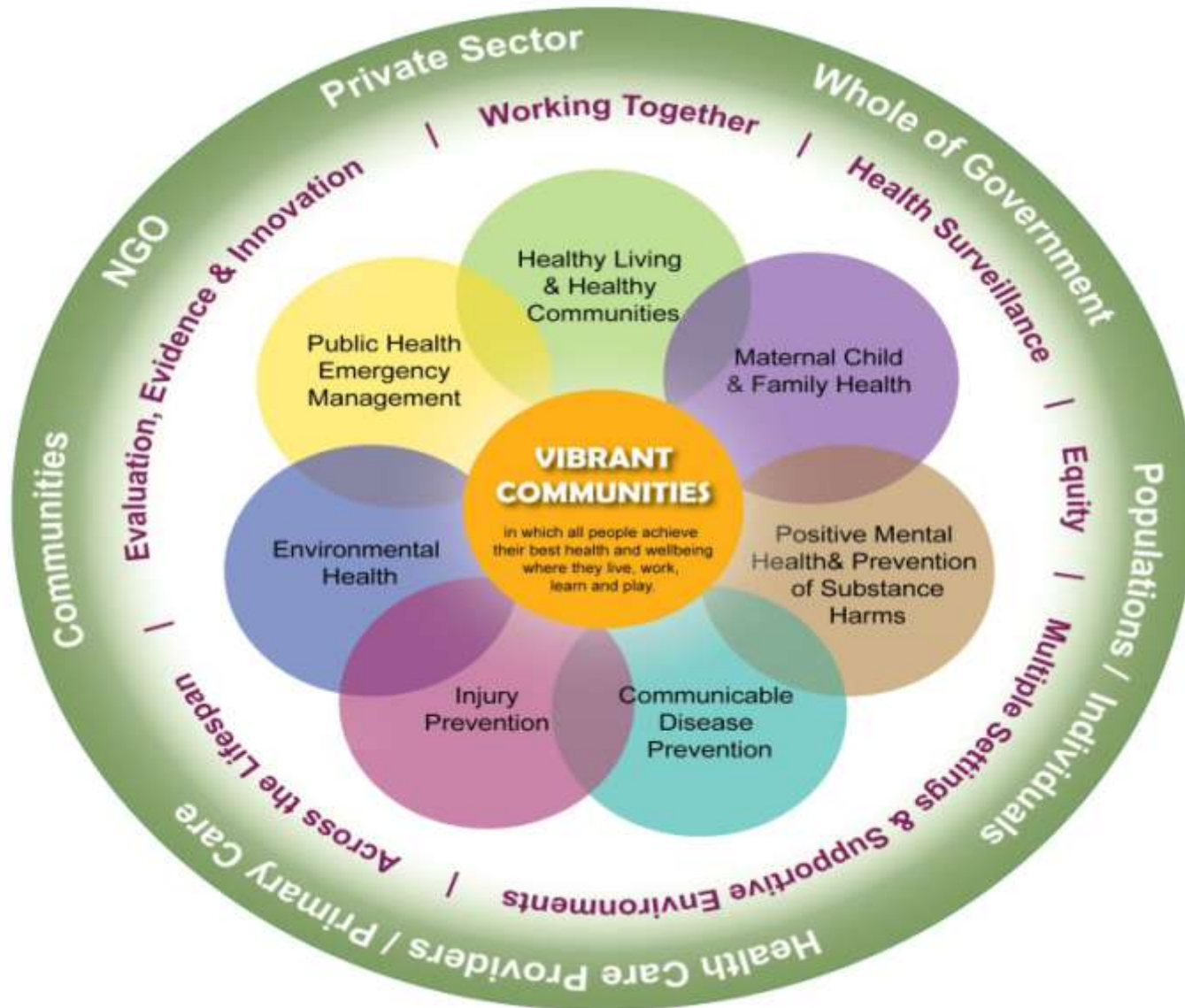
Our Vision

Vibrant communities in which all people achieve their best health and well-being where they live, work, learn and play

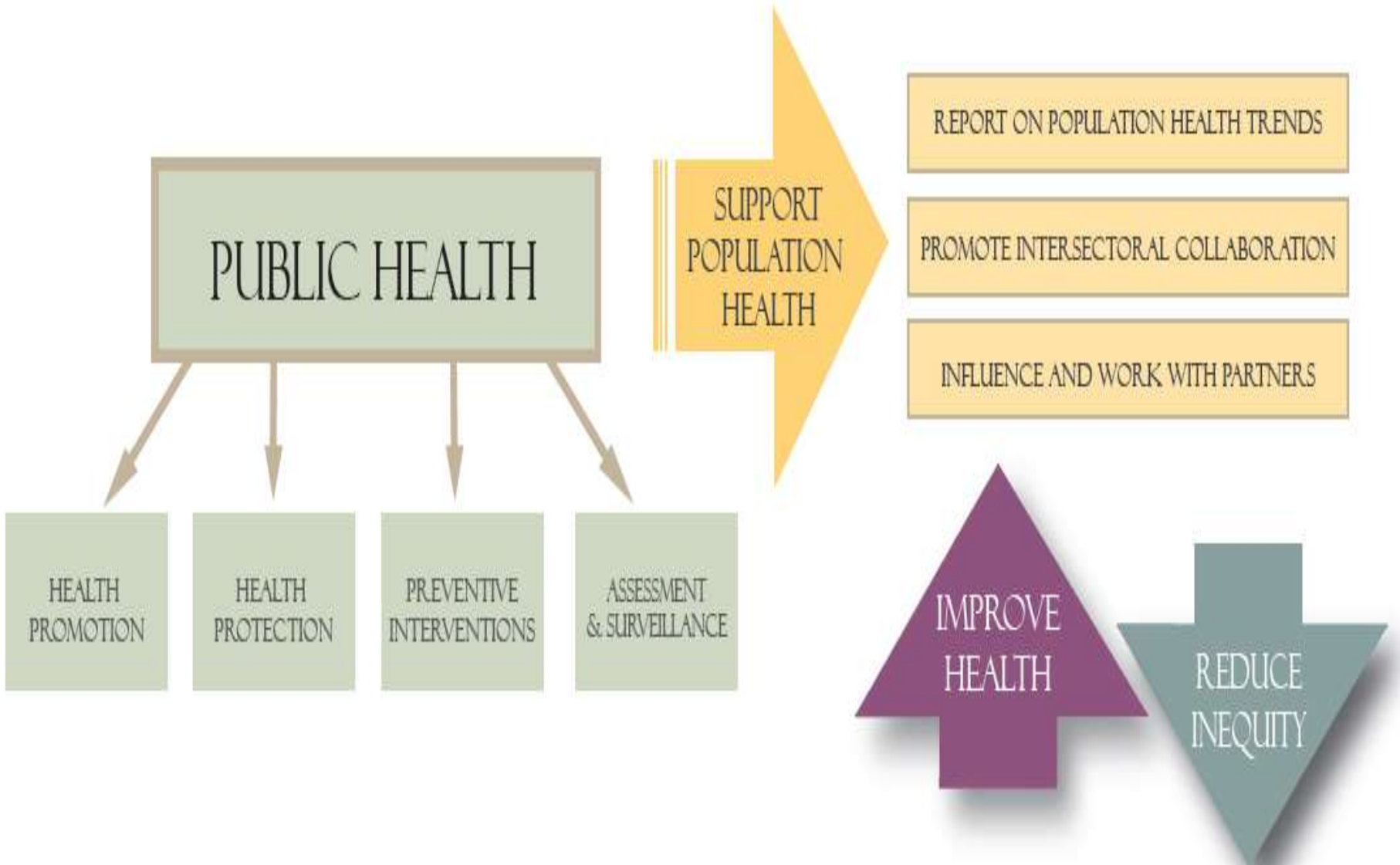
Mission Statement

We promote, improve and protect the health and well-being of British Columbians through leadership, partnership, innovation and action.

VISIONARY GOALS



ADDRESSING HEALTH EQUITY



MEASURING PERFORMANCE

- ❖ Each Goal includes indicators and targets to measure progress (28 measures)
 - ❖ As many as possible are from existing provincial strategies
- ❖ Six Overarching measures
 - ❖ Targets determined by extrapolating trend lines and choosing ambitious but achievable outcomes
- ❖ Commitment to develop Public Health Surveillance Plan
 - ❖ Develop by 2014
 - ❖ Implement by 2023



PRIORITY-SETTING

INPUT FROM PARTNERS

- Work with partners to identify need and new evidence or opportunities
- Identify desired direction
- Analyze current situation (SWOT)

FIND ROOT CAUSES

- Burden of disease
- Contextual influences of health (determinants)
- Core programs that need attention or could be expanded

SELECT INTERVENTIONS

- Analyze potential initiatives using a range of criteria (evidence, reach, equity, etc)
- Identify gaps in tools of influence (legislation, financial, service delivery, etc)

DEVELOP & IMPLEMENT

- Identify requirements
- Secure funding
- Design interventions
- Develop accountability mechanisms
- Consider populations, setting & inequities
- Develop implementation plans

NEXT STEPS

- ❖ Develop Surveillance Plan
- ❖ Implement current priorities
- ❖ Strengthen partnerships
- ❖ Report on progress
- ❖ Identify priorities for the future



QUESTIONS??

UP NEXT – JEFFREY SIMPSON



**JEFFREY
SIMPSON**



**WHY CANADA'S HEALTH CARE SYSTEM
NEEDS TO BE DRAGGED INTO
THE 21ST CENTURY**